



**Lincoln County Schools**

**Elaine Jenkins, Superintendent**

353 N Generals Boulevard  
Lincolnton, NC 28092  
(704) 732-2261

**DISTRICT PROFILE**

**School Size**

The average number of students in an elementary (K-5), middle (6-8), and high (9-12) school in this district and the state.

	ELEMENTARY	MIDDLE	HIGH
District	384	682	918
State	497	657	792

**Average Class Size**

The average number of students enrolled in "typical" K-8 classrooms.  
\* Legislation mandates that class sizes for grades 4-12 are not restricted for 2009-10 and 2010-11.

	DISTRICT	STATE
Kindergarten	17	19
Grade 1	19	20
Grade 2	18	19
Grade 3	20	20
Grade 4	22	21
Grade 5	21	21
Grade 6	22	22
Grade 7	23	21
Grade 8	21	21

**Average Course Size**

The average number of students enrolled in the courses listed at the time of testing.  
\* Chemistry and Physics tests were eliminated from the ABCs effective 2009-10.

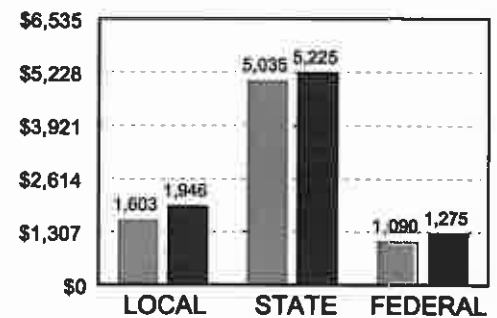
	DISTRICT	STATE
English I	19	18
Algebra I	22	20
Algebra II	26	20
Geometry	23	20
Biology	22	18
Chemistry	---	---
Physical Science	21	18
Physics	---	---
Civics & Econ.	22	18
US History	23	18

**FINANCIAL SUPPORT**

**Source of Funds (Amount per Student)**

Public schools in North Carolina operate with funding from local, state, and federal sources. The financial support reflected in these numbers includes all expenses concerned with operating schools, including teacher and administrator salaries, textbooks, and other educational supplies and materials. Facilities costs are not included.

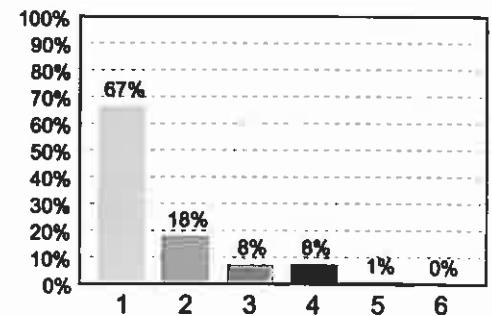
■ District      ■ State Average



**Use of Funds**

Education is a labor-intensive enterprise, as reflected in the accompanying chart. Salaries for teachers, principals, and other educators are usually the largest expense in school districts. State and federal funds are generally allotted for specific purposes, services, or programs.

1. Salaries    2. Benefits    3. Supplies & Materials    4. Purchased Services    5. Equipment    6. Other



**HIGH STUDENT PERFORMANCE**

**Performance of Students in Each Grade on the ABCs End-of-Grade Tests**  
Percentage of Students' Scores At or Above Grade Level

	Grade 3		Grade 4		Grade 5		Grade 6		Grade 7		Grade 8		OVERALL	
	Reading	Math	Reading	Math	Reading	Math	Reading	Math	Reading	Math	Reading	Math	Reading	Math
<b>District</b>	74.5%	86.0%	76.4%	85.4%	76.4%	84.7%	82.5%	89.6%	70.7%	86.9%	74.9%	90.5%	76.0%	87.2%
<b>State</b>	66.4%	81.9%	71.6%	83.0%	71.1%	81.2%	75.3%	80.5%	68.8%	80.2%	69.5%	83.9%	70.1%	81.8%

N/A = Fewer than five students

**HIGH STUDENT PERFORMANCE, CONTINUED**

To learn more about federal No Child Left Behind (NCLB) requirements, visit <http://www.ncpublicschools.org/nclb/>

For information about the ABCs of Public Education and Adequately Yearly Progress (AYP), visit <http://www.ncpublicschools.org/accountability/>

**School Attendance**

The average percentage of students who attend school daily at the elementary (K-5), middle (6-8), and high (9-12) school for this district and the state.

	ELEMENTARY	MIDDLE	HIGH
District	95%	95%	95%
State	95%	95%	95%

**Performance of Each Student Group on the ABCs End-of-Grade Tests**

Percentage of Students, Grouped by Gender, Ethnicity, and Other Factors, Who Passed BOTH the Reading and Math Tests

	Male	Female	White	Black	Hispanic	Amer. Indian	Asian Pacific Islander	Multi-Racial	E.D.	N.E.D.	L.E.P.	Migrant Students	Students with Disabilities
District	70.2%	75.8%	76.8%	52.6%	58.0%	81.8%	84.2%	60.1%	60.6%	85.2%	34.5%	N/A	39.0%
State	64.2%	68.5%	78.7%	47.0%	51.5%	52.6%	77.3%	67.8%	52.1%	82.0%	33.9%	41.8%	34.4%

E.D. = Economically Disadvantaged      N.E.D. = Not Economically Disadvantaged      L.E.P. = Limited English Proficiency  
N/A = Fewer than five students

**Performance of Students in Each Course on the ABCs End-of-Course Tests**

Percentage of Students' Scores At or Above Grade Level

	English I	Algebra I	Algebra II	Geometry	Biology	Chemistry	Physical Science	Physics	Civics & Econ.	US History
District	84.9%	81.3%	89.2%	87.7%	88.2%	—	81.8%	—	84.0%	85.6%
State	82.4%	77.8%	84.9%	82.3%	81.2%	—	76.4%	—	78.7%	81.6%

N/A = Fewer than five students  
\* Chemistry and Physics tests were eliminated from the ABCs effective 2009-10

**Performance of Each Student Group on the ABCs End-of-Course Tests**

Percentage of Passing Scores on the End-of-Course Tests grouped by Gender, Ethnicity, and Other Factors

	Male	Female	White	Black	Hispanic	Amer. Indian	Asian Pacific Islander	Multi-Racial	E.D.	N.E.D.	L.E.P.	Migrant Students	Students with Disabilities
District	83.8%	86.6%	87.2%	65.9%	79.2%	76.2%	87.5%	85.2%	77.7%	89.7%	63.0%	N/A	60.4%
State	80.1%	81.3%	88.5%	67.0%	74.1%	71.7%	88.0%	83.3%	70.9%	87.9%	55.8%	62.3%	54.9%

E.D. = Economically Disadvantaged      N.E.D. = Not Economically Disadvantaged      L.E.P. = Limited English Proficiency  
N/A = Fewer than five students

**School Performance on ABCs**

Each year, schools in North Carolina may receive several designations based on their performance on the state's ABCs accountability report.

		PERCENT OF SCHOOLS					
		ELEMENTARY		MIDDLE		HIGH SCHOOL	
		District	State	District	State	District	State
HIGH GROWTH	School made expected growth & at least 60% of the students achieved their growth expectations	43%	49%	75%	62%	25%	53%
EXPECTED GROWTH	School made expected growth	50%	38%	25%	35%	75%	31%
HONOR SCHOOL OF EXCELLENCE	At least 90% of students at grade level & the school made expected growth or more & adequate yearly progress (AYP)	14%	7%	0%	7%	25%	11%
SCHOOL OF EXCELLENCE	At least 90% of students at grade level & school made expected growth or more	0%	0%	0%	0%	0%	3%
SCHOOL OF DISTINCTION	80 to 89% of students at grade level & school made expected growth or more	43%	27%	75%	28%	75%	35%
SCHOOL OF PROGRESS	At least 60 to 79% of students at grade level & school made expected growth or more	36%	43%	25%	51%	0%	28%
NO RECOGNITION	60 to 100% of students at grade level, but school did not make expected growth	7%	8%	0%	3%	0%	18%
PRIORITY SCHOOL	50 to 59% of students at grade level or less than 50% of students at grade level but school made expected growth	0%	14%	0%	11%	0%	5%
LOW PERFORMING	Less than 50% of school at grade level & school did not make expected growth	0%	1%	0%	1%	0%	0%

**HIGH STUDENT PERFORMANCE, CONTINUED**

**Adequate Yearly Progress (AYP) Results**

North Carolina sets target goals that schools must meet to make Adequate Yearly Progress (AYP) under the federal No Child Left Behind (NCLB).

This district met 53 out of 58 AYP targets.

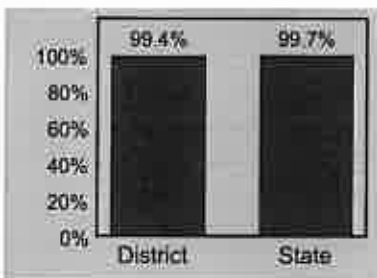
	% OF SCHOOLS THAT MADE AYP			% OF SCHOOLS THAT DID NOT MAKE AYP			% OF SCHOOLS IN TITLE I SCHOOL IMPROVEMENT STATUS		
	Elementary	Middle	High	Elementary	Middle	High	Elementary	Middle	High
<b>District</b>	93%	75%	60%	7%	25%	40%	7%	25%	N/A
<b>State</b>	68%	42%	43%	32%	58%	57%	19%	11%	1%

Percentages may not total 100% due to rounding.

**SAFE, ORDERLY & CARING SCHOOLS**

**ACCESS TO TECHNOLOGY**

**Percentage of Classrooms Connected to the Internet**



**Number of Students per Instructional Computer**

	NUMBER OF STUDENTS
<b>District</b>	2.9
<b>State</b>	2.37

**Number of Students per Internet-Connected Computer**

	NUMBER OF STUDENTS
<b>District</b>	2.9
<b>State</b>	2.37

**School Safety**

The number of acts of crime or violence reported per 100 students, which includes all acts occurring in school, at a bus stop, on a school bus, on school grounds, or during off-campus, school-sponsored activities.

	ELEMENTARY	MIDDLE	HIGH
<b>District</b>	0	1	2
<b>State</b>	0	1	2

**Student Out-of-School Suspensions and Expulsions**

The average number of short-term (10 days or fewer) and long-term (more than 10 days) out-of-school suspensions and expulsions per 100 students.

	ELEMENTARY	MIDDLE	HIGH
<b>Short-Term Suspensions</b>	4	25	26
<b>Long-Term Suspensions</b>	0	0	0
<b>Expulsions</b>	0	0	0

**QUALITY TEACHERS AND ADMINISTRATORS**

**QUALIFICATIONS OF TEACHERS**

**Classroom Teachers**

The average number of classroom teachers in an elementary (K-5), middle (6-8), and high (9-12) school for this district and the state.

	ELEMENTARY	MIDDLE	HIGH
<b>District</b>	30	47	49
<b>State</b>	36	45	54

**Fully Licensed Teachers**

The percentage of classroom teachers with clear initial or clear continuing licenses (not lateral entry, alternative, or emergency licensed teachers).

	ELEMENTARY	MIDDLE	HIGH
<b>District</b>	100%	97%	94%
<b>State</b>	98%	94%	92%

**QUALITY TEACHERS AND ADMINISTRATORS, CONTINUED**

<b>QUALIFICATIONS OF PRINCIPALS</b>	
<b>Principals with Advanced Degrees</b>	
The percentage of principals who have completed an advanced college degree beyond a master's degree.	
District	26%
State	22%
<b>Years of Experience as a Principal</b>	
The percentage of principals with experience of 0-3 years, 4-10 years, or over 10 years as a principal.	
	0-3 YEARS      4-10 YEARS      10+ YEARS
District	50%      38%      13%
State	45%      41%      15%
<b>Principal Turnover Rate</b>	
The percentage of principals employed last year who are no longer employed in the same school this year.	
District	13%
State	28%

**Keeping You Informed**

More information about your district is available on the NC School Report Cards website at <http://www.ncreportcards.org>

**Teachers with Advanced Degrees**

The percentage of teachers who have completed an advanced college degree, including a master's or doctoral degree.

	ELEMENTARY	MIDDLE	HIGH
District	30%	29%	25%
State	28%	26%	26%

**National Board Certified Teachers**

The average number of school staff, including teachers, administrators, and guidance counselors, who have received National Board Certification at the elementary (K-5), middle (6-8), and high (9-12) school levels in this district and the state.

	ELEMENTARY	MIDDLE	HIGH
District	4	8	7
State	5	6	9

**Years of Teaching Experience**

The percentage of teachers who have taught for 0-3 years, 4-10 years, or over 10 years in this district and the state.

	ELEMENTARY SCHOOL			MIDDLE SCHOOL			HIGH SCHOOL		
	0-3 Years	4-10 Years	10+ Years	0-3 Years	4-10 Years	10+ Years	0-3 Years	4-10 Years	10+ Years
District	17%	34%	49%	20%	33%	47%	16%	31%	54%
State	20%	32%	48%	20%	32%	48%	19%	28%	54%

**Teacher Turnover Rate**

The percentage of teachers who left their school district from March of the prior year to March of the current year.

	ELEMENTARY	MIDDLE	HIGH
District	6%	7%	9%
State	11%	12%	13%

**Highly Qualified Teachers**

Percentage of classes taught by Highly Qualified teachers as defined by federal law.

	ELEMENTARY	MIDDLE	HIGH
District	99%	94%	98%
State	100%	97%	96%



Public Schools of North Carolina  
State Board of Education | Department of Public Instruction

## Buyer Estimated Expenses

### Mortgage Amount

Purchase Price		_____	+
Earnest Money	_____	-	
Down Payment	_____	-	
Loan Amount		_____	+

### Closing Expenses

Appraisal	_____	+
Credit Report	_____	+
Inspections	_____	+
Survey	_____	+
Attorney Fees	_____	+
Insurance	_____	+
Pro-rata Taxes	_____	+
Loan Fees	_____	+
(determined by lender)		

Total Closing Fees \_\_\_\_\_ +